



**ALASKA DIVISION OF HOMELAND SECURITY &
EMERGENCY MANAGEMENT**



SITUATION REPORT 21-085 • MAR 26, 2021

Toll-Free 1.800.478.2337

Anchorage Area 907.428.7000

SEOC 907.428.7100

<p><u>SEOC Preparedness Level</u></p> <p>Heightened Awareness – Response to COVID-19 and Recovery from December Southeast Storms</p>	<p>http://ready.alaska.gov</p>	<p><u>National Terrorism Advisory System:</u></p> <p>View this site for the latest NTAS bulletin: read the current NTAS Bulletin here.</p>
<p><u>Maritime Security (MARSEC)</u></p> <p>Level:1-Minimum Appropriate Security Measures</p>	<p>WHO Novel Coronavirus Pandemic (COVID-19):</p> <p>2019 Novel Coronavirus</p>	<p><u>Alaska Military Installation Force Protection Level:</u> FPCON Bravo</p>

(Significant changes from previous situation reports are in red.)

THREAT LEVEL CHANGES:

None

Significant Issues:

Coronavirus (COVID-19) Pandemic:

A unified command has been established at the SEOC. The SEOC continues to support statewide response to COVID-19.

State of Alaska Department of Health and Social Services (DHSS)

DHSS is operating as the Medical Branch under the State EOC/Unified Command.

For more information about the outbreak refer to:

<https://covid19.alaska.gov/>

<https://www.cdc.gov/coronavirus/2019-ncov/index.html>

The Alaska DHSS website is located at <http://dhss.alaska.gov/Pages/default.aspx>

NTAS BULLETIN

The United States Department of Homeland Security has issued a National Terrorism Advisory System Bulletin effective January 27, 2021 for a heightened threat environment across the United States.

Read the bulletin here: https://www.dhs.gov/sites/default/files/ntas/alerts/21_0127_ntas-bulletin.pdf

Travel Alerts and Conditions

COVID-19 Health Advisories may affect travel. Check <https://covid19.alaska.gov/> for current advisories.

For current driving conditions dial 511 or link to <http://511.alaska.gov/>

Barry Arm Landslide / Tsunami Risk

For the latest information on the Barry Arm Landslide and Tsunami risk, click here:
[DGGS Barry Arm Landslide and Tsunami Hazard](#)

Recent Earthquakes

USGS Earthquake Information: <http://earthquake.usgs.gov/>
National Tsunami Warning Center: <http://tsunami.gov/>

Alaska Volcanoes

Cleveland Alert Level: **Advisory** and Aviation Color Code: **Yellow**
Semisopchnoi Alert Level: **Watch** and Aviation Color Code: **Orange**
Veniaminof Alert Level: **Watch** and Aviation Color Code: **Orange**

For Alaska Volcano updates, go to: <https://www.avo.alaska.edu/>

Air Quality Index (AQI) Advisories

For the most up to date Air Quality Index Advisories:

<http://dec.alaska.gov/Applications/Air/airtoolsweb/Home/Index>

Avalanche Forecast:

Check the Avalanche Forecast Center closest to your area for the most up to date information on Avalanche potential. <https://alaskasnow.org/> or <https://www.weather.gov/afc/avalanche>

Spills of Oil and Hazardous Substances

The ADEC Spill Prevention and Response page is located at:

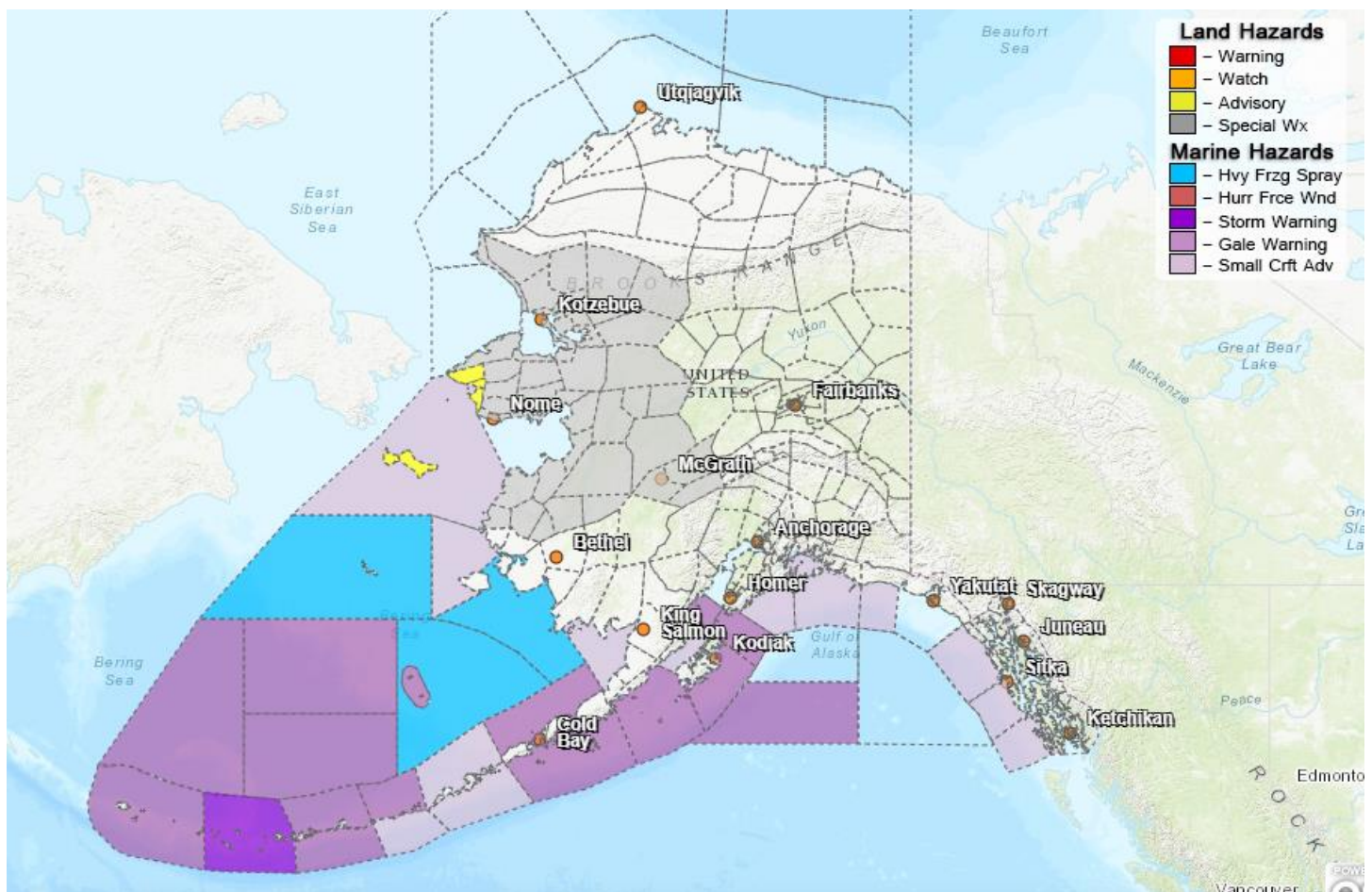
<http://dec.alaska.gov/spar/ppr/spill-information/response/>

Alaska Cyber Security Information

State Employees may sign up for cybersecurity notifications and alerts at

<https://oit.alaska.gov/Security>

Significant Weather:



A Winter Weather Advisory is in effect for St. Lawrence Island and the Bearing Strait Coast until 6:00 P.M. today for snow and gusting winds.

A Special Weather Statement has been issued for the West Coast and Western Interior for Sunday and Monday. Heavy snow with strong gusting winds is expected and blizzard conditions may develop along the western coastal region.

For more information and the most current weather, Watches / Warnings / Advisories go to:

<http://www.weather.gov/arh>

The Next Situation Report: will be 29 March 2021. A significant change in the situation or the threat level will prompt an interim report.

This report is posted on the internet at <https://ready.alaska.gov/sitrep>. To register for email distribution, go to <http://list.state.ak.us/mailman/listinfo/dhsem.situation.report>. Direct questions regarding this report to the SEOC at 907-428-7100 or seoc@alaska.gov